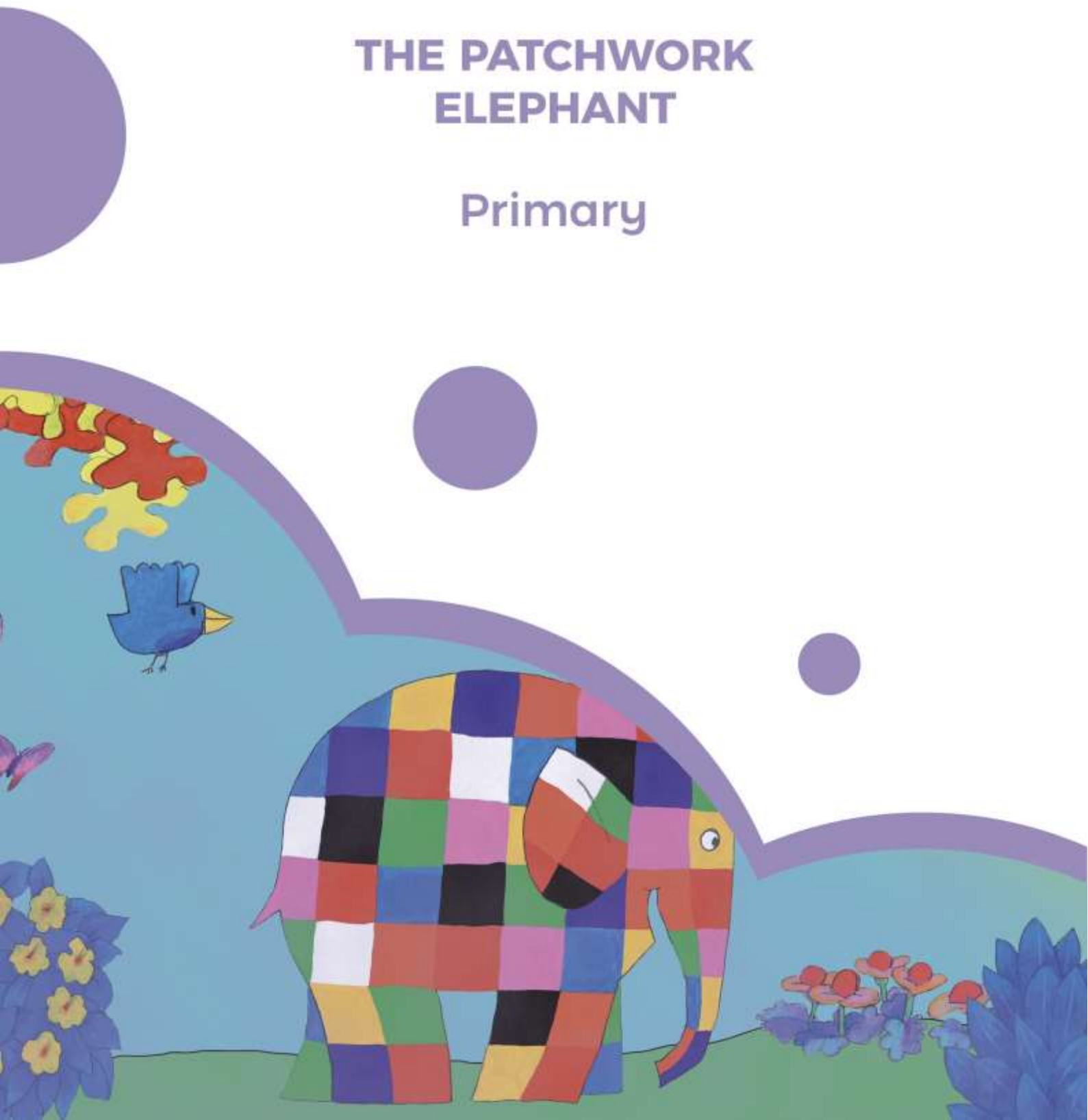


ELMER

THE PATCHWORK ELEPHANT

Primary





THE STORY

Elmer, the patchwork elephant, is a different elephant. He enjoys the role of being the clown of the elephant herd. All the other elephants laugh at his jokes and enjoy the games.

However, one day, Elmer stops having fun playing with the other elephants. Now is the time to learn that it is OK to be different.

Elmer teaches us that everyone has something unique to bring to the table and there's no point trying to disguise your true self. Always be yourself.



BEFORE GOING TO THE THEATRE

1. So many colors

Elmer is a very colorful elephant. Can you find the words and their colors in this crossword?

TOMATO BANANA FLAMINGO GRAPE BAT MILK

A	R	G	R	A	P	E	C	D	B	M
F	P	R	P	L	O	U	I	H	U	I
D	E	E	F	M	K	J	R	R	U	L
W	Y	E	L	L	O	W	S	P	B	K
B	A	N	A	N	A	H	S	K	L	P
A	C	D	M	A	P	I	N	K	A	E
T	I	H	I	F	L	T	I	E	C	R
R	P	Q	N	D	R	E	D	Z	K	P
Y	E	H	G	W	E	M	I	S	R	E
K	Z	T	O	M	A	T	O	Q	S	K

2. The elephants

Elmer is an elephant. Can you describe how are the elephants?

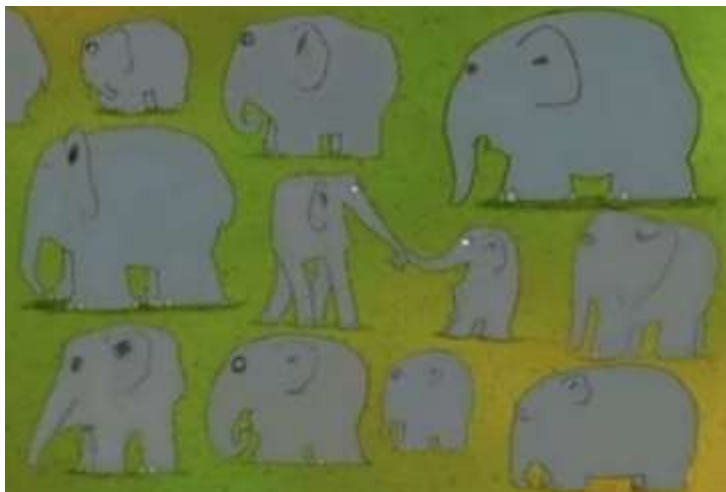


Image from: <https://vimeo.com/20704241>



3. What, who, when, where?

You're about to meet Elmer, but let's first know more about you. Answer these questions.

- *What is your name?*
- *What is your favorite jungle animal?*
- *What is your favorite color?*
- *Who do you think Elmer is?*
- *Who is your funniest friend?*
- *Where can you find elephants?*
- *Where do you live?*
- *When do you go to school?*
- *When do you have dinner?*

Now write your questions and ask them to your classmate:

- *What.....?*
- *Where.....?*
- *When.....?*
- *Who.....?*



4. Let's help the elephants

Do you like animals? Let's help them drawing their perfect home:





AFTER GOING TO THE THEATRE

1. Did you enjoy the show?

Write the three things you enjoyed the most about the play.
For example, "I loved the colors", "the animals were so funny".

1.
2.
3.

2. What makes you different?

Elmer is a different and colorful elephant. What makes you and your friends different? Tell us!





3. Building a Stage

Do you remember the jungle in the theatre? How would you build it? What would you use? Describe and draw your own stage:

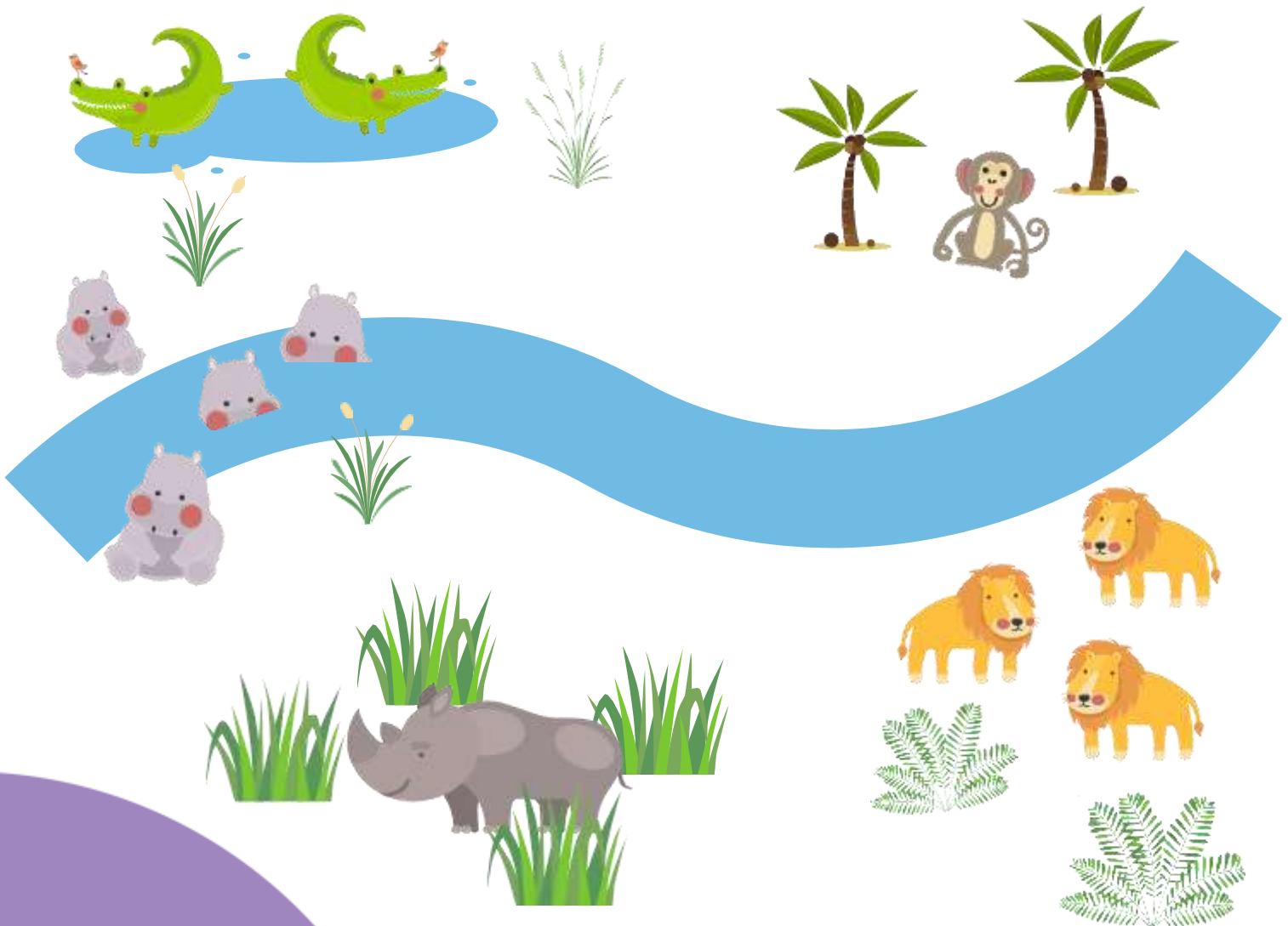




4. Follow the map.

Elmer went through a short journey. Do you remember it?
Follow the instructions drawing a line.

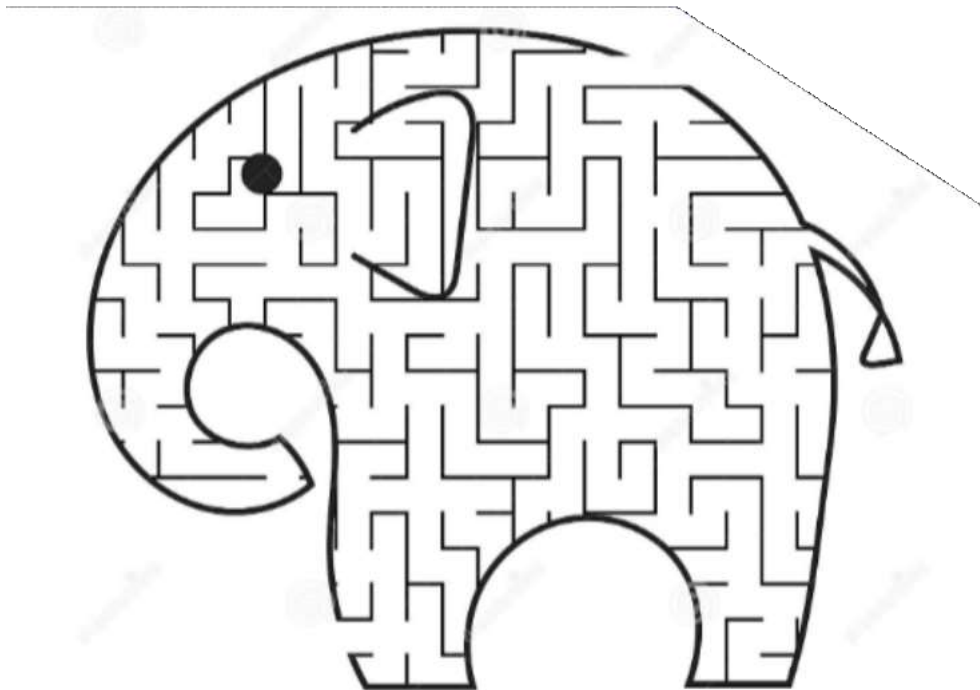
Start at the crocodiles' pond and then go to the monkeys' tree. From the tree cross the river but don't do it next to the Hippopotamus, and meet the lions. The lions will tell you to look through the grass and find the Rhino.





5. The Labyrinth

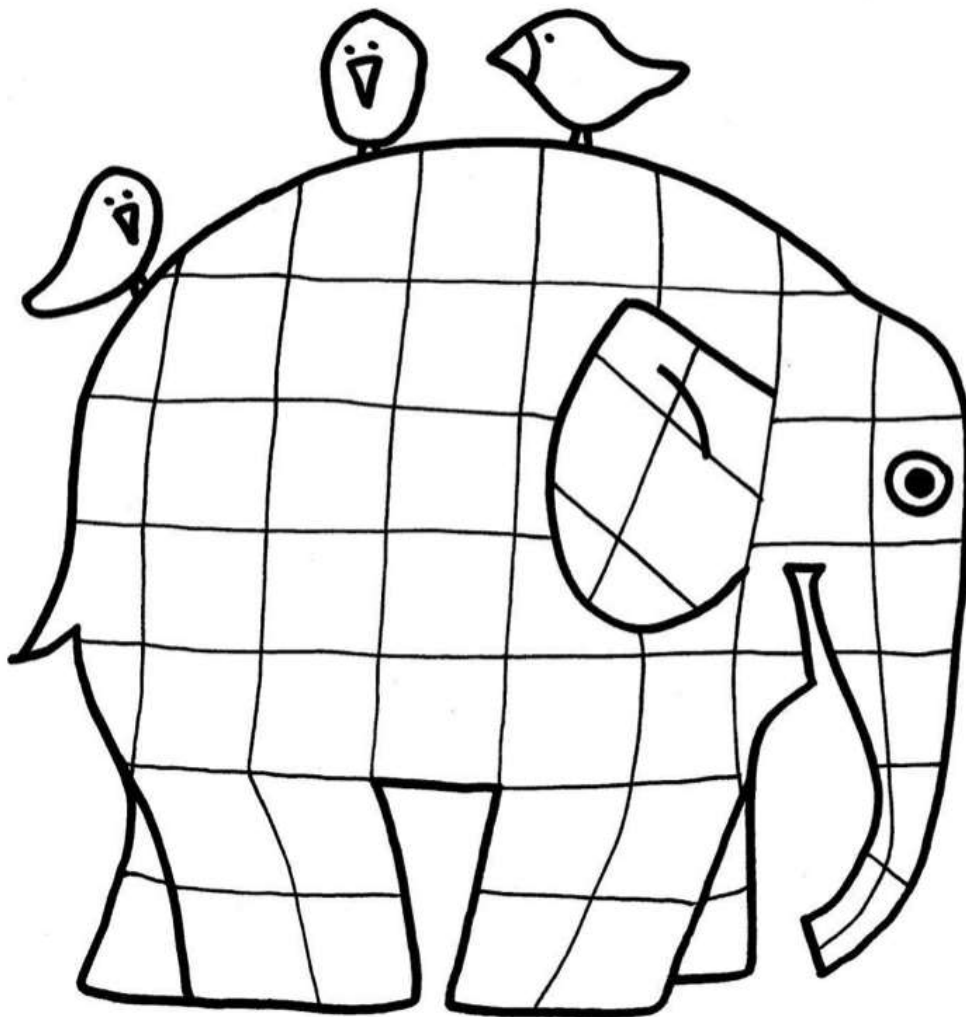
You know how to use a map, now try to find the way to cross the labyrinth.





7. Make your own patchwork elephant

Paint this elephant. You can make him wear hats, gloves...





www.transeduca.com

info@transeduca.com

911 138 140 / 934 740 002