

TOM SAWYER

1st and 2nd of ESO

Teacher's Guide





BEFORE GOING TO THE THEATRE

1. THE STORY

Tom Sawyer is a kid who doesn't like school and who prefers to enjoy playing on the banks of the river. His aunt Polly is very worried because he always gets in trouble. But Tom is a rebellious and adventurous child with a big heart.

He spends his days with his best friend, Huckleberry Finn. The two friends like to fish, sleep, eat and play at being pirates.

One day, they find a mysterious treasure in a cemetery. They decide to hide it in a cave, but a very dangerous murderer will follow them.

Discuss the following questions with the whole class:

Do you know who Tom Sawyer is? Have you ever seen a film or read a book about him?



Is he naughty or is he responsible?



Do you think he has any friends? What are they like?



Do you think Tom listens to his Aunt Polly or prefers going on adventures?

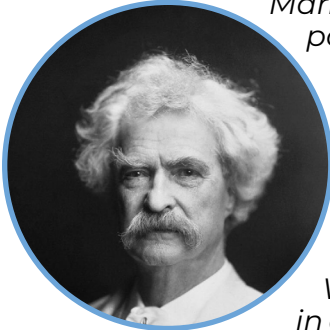


Have you ever disobeyed your parents or grandparents to do something wrong? How did it end?





2. THE AUTHOR



Mark Twain, pseudonym of Samuel Langhorne Clemens, was a very popular comedian and writer from the United States.

He was born in 1835 in Florida, a small village in Missouri. His memories of his hometown were the source of inspiration for his novels. When he was 12 years old, his father died and he was forced to work to help his family. He started working as an apprentice in printing and became a typographer.

With his brother, he undertook adventures to get money, working in other jobs: he was a pilot of a steamboat, a soldier in the American Civil War, a wood merchant and a silver miner (without much luck).

In 1862, in the state of Nevada, where his brother was appointed secretary of the government, Twain began working as a journalist. The following year he began to sign the works with the pseudonym Mark Twain, which on the Mississippi means two fathoms deep (minimum necessary for good navigation).

*Unexpectedly, in 1865 he gained great popularity with one of his stories. In 1870 he married Olivia Langdon, with whom he fell in love after writing her a letter every day for a year. The following years he wrote his most famous works: *The Adventures of Tom Sawyer* (1876) and *The Adventures of Huckleberry Finn* (1884).*

He travelled with his wife around the world giving lectures and finally they settled in New York. From this moment on, Twain suffered a series of personal misfortunes (the invalidity of his wife and the death of two of his children). Finally, Mark Twain died in 1910 in New York.

Twain was recognized worldwide during the last years of his life, for the quality and quantity of his literary production. At his death, he was known for more than 500 works, many unpublished, widely read since then by young people and adults.

Discuss with your class:

- a) Do you think Mark Twain had an easy life?
- b) He started working when he was 12 years old. Does this happen nowadays?
- c) Do you know other famous writers? Have you read any of their works?



3. THE MAIN CHARACTERS

Tom Sawyer is a young boy who lives near the Mississippi River. He is easy-going, peaceful and a bit naughty. He always skips school classes and goes to play. His biggest dream is to be a pirate in search of great treasures. He is an orphan who has been raised by his aunt Polly.

Huckleberry Finn, like Tom, is a boy who does not like going to school. He prefers to relax and whistle. He has pimples on his face, but he is convinced that he will be a millionaire and that no one will care. Huck is clumsy and not as clever as Tom, but he's determined and brave.



Can you spot all the adjectives in the descriptions? Do you know the meaning?

Tom Sawyer: young, easy-going, peaceful, naughty, great, big.

Huckleberry Finn: millionaire, clumsy, clever, determined, brave.



4. ADVENTURES AND FRIENDSHIP

Huckleberry Finn and Tom Sawyer are best friends. They play after school and go on adventures together.

Who are your best friends?

.....

.....

Draw and describe them using adjectives (funny, big, lazy, clever, etc.).

Do you like adventures? Explain your last adventure with a friend.

.....

.....

.....





5. VOCABULARY

a) Opposites: Fill in the blanks

The opposites of all these words appear in the play. Can you guess what they are?

- | | |
|--------------|--------------------|
| 1. Boring | <i>Interesting</i> |
| 2. Failure | <i>Success</i> |
| 3. Somebody | <i>Nobody</i> |
| 4. Exit | <i>Enter</i> |
| 5. Slow down | <i>Hurry up</i> |
| 6. Early | <i>Late</i> |
| 7. Finish | <i>Start</i> |
| 8. Old | <i>New</i> |
| 9. False | <i>True</i> |

b) In this show, Joe commits a crime. Can you match these crimes with the descriptions?

- | | |
|--------------------------|---|
| 1. to pick-pocket | a. to make an illegal copy of something (e.g. money) |
| 2. to murder | b. to steal from a bank or shop |
| 3. to forge | c. to kill someone |
| 4. to rob | d. to take control of an aeroplane illegally |
| 5. to mug | e. to steal with aggression in the street |
| 6. to kidnap | f. to keep someone in exchange for money |
| 7. to hijack | g. to steal from a house |
| 8. to burgle | h. to steal from someone without them knowing |

1-h 2-c 3-a 4-b 5-e 6-f 7-d 8-g

**c) Read and practice this vocabulary from the play.**

Let your students work with their dictionaries to look up the meaning of the words they don't understand. You can try to make sentences with every word from the list.

Brush	Spider	Punishment	Moustache	Pimple	Anchor	Graveyard
Corpse	River	Funeral	Casket	Skull	Boat	Paddle
To steal	To panic	Fault	Portrait	To snore	Fence	Candle

6. TREASURE HUNT

Draw the right path on the map of the next page following these instructions:

1. You are on the pirate boat with Tom Sawyer and Huckleberry Finn.
2. Travel to the north (N on the compass).
3. OH NO! An octopus attacked you. Turn left, to the west, and you will see a lighthouse. Land there.
4. Go to the eastern forest to find the hidden shovel.
5. Once you are there, head to the south by the coast until you find a volcano.
6. Go inside the volcano to check if the treasure is there.
7. RUN, RUN! It's about to erupt! Go to the southwest, you'll find an oasis there. Are you thirsty? Stop here to drink after the long run.
8. You are facing the south. Turn left, you'll see three caves.
9. Explore them one by one. Is the treasure there? Hmm... the last place is the giant Skull Rock...
 - But it's so dangerous.
 - Who cares? Let's go!
10. Walk towards Skull Rock.
 - Ahhh! Is that a corpse?
 - No, WAIT! It's the TREASURE!

11. Congratulations! You found it!





7. GRAMMAR

Write one question for each of the answers:

a) Polly is Tom's aunt.

Who is Polly?

a) The fence is white.

What colour is the fence?

a) Tom and Huck don't go to school.

Do Tom and Huck go to school?

a) Huck has a pimple on his face.

What does Huck have on his face?

a) Tom and Huck hide the treasure in a cave.

Where do Tom and Huck hide the treasure?

a) They got to the island by ship.

How did they get to the island?

a) Aunt Polly is scared because she thinks Tom is dead.

Why is Aunt Polly scared?

a) Tom and Huck come back to the village at night.

When do Tom and Huck come back to the village?



Now, let's match the verb with the correct word:

a) Do/Make

a job
your homework
a drawing
a cake
a bet
dinner
a promise
the washing-up
the bed

b) Rent Hire

a flat
a car
a bicycle
a coach
an apartment
a suit

c) Hear/Listen to

gossip
music
footsteps
a noise
the radio
the telephone
a problem

d) See Watch

a play
television
a sunset
a friend
a ghost
a film

Do: a job, your homework, a drawing, the washing-up

Make: the bed, a promise, dinner, a bet, a cake

Rent: a flat, an apartment

Hire: a car, a coach, a suit, a bicycle

Hear: footsteps, the telephone, a noise

Listen to: the radio, music, a problem, gossip

See: a ghost, a friend, a play

Watch: the television, a film, a sunset



8. LISTENING

Listen to track 1 and answer the following questions:

- Why is Tom Sawyer punished?

Because he didn't go to school. He missed his classes yesterday.

- What animal did he throw at his teacher?

He threw a spider at her.

- Aunt Polly says she doesn't want Tom to be out at night. Why?

Because two bad (and dangerous) men robbed a bank and they are free.

- What does Tom Sawyer do to improve the portrait of Aunt Polly?

He draws horns on it (because she is a demon), bigger teeth (because she looks like an animal) and a moustache (so she can look prettier).

- What does Tom promise to give Huck in exchange for painting the fence?

Half of his treasure (half of the gold he says he has found).

- Why does Huck want to be rich?

Because if he were rich no one would care about the giant pimple on his face.

9. SPEAKING

Huckleberry Finn is embarrassed by a pimple on his face. He tries to get rid of it. Discuss with your class about physical complexes and self-acceptance.



10. WRITING

Write a composition about the things you would take to a desert island and explain why.

.....

.....

.....

.....

.....

.....

.....

.....





AFTER GOING TO THE THEATRE

Hello again! Did you enjoy the show? Let's see if you remember the plot:

a) How many characters appear in the play? How many actors play them?

Four characters: Tom, Huck, Aunt Polly and Joe. They are played by two British actors.

b) Who do you think was the funniest character and why?

.....
.....

c) How are they dressed?

.....
.....
.....

d) What is your favourite scene? Why?

.....
.....
.....
.....
.....





e) Write a review of the play. Remember to include comments about the acting, costumes, set, sound and lighting. (100 words)

.....

.....

.....

.....

.....

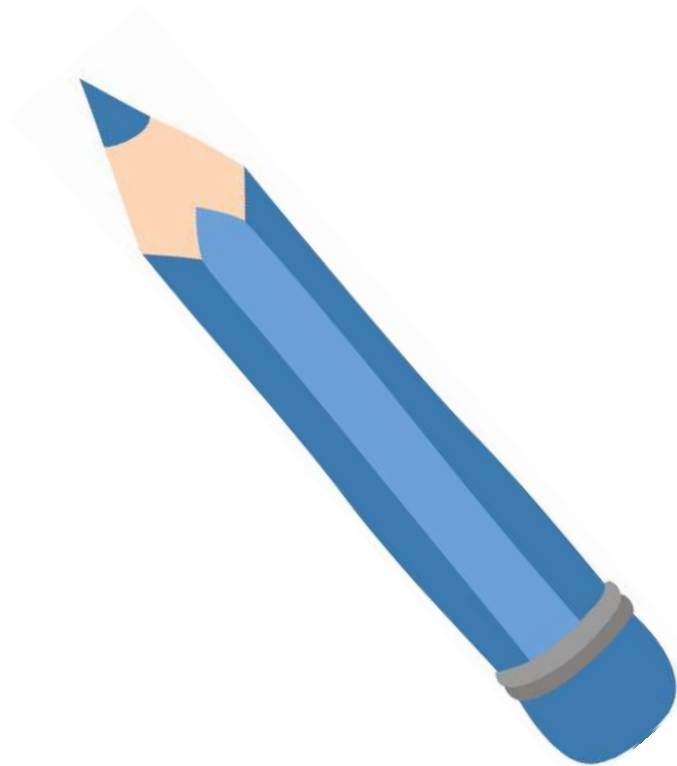
.....

.....

.....

.....

.....





Order the scenes from 1 to 10 and share your answer with your classmates.

- 7 The town thinks Tom and Huck are dead.
- 2 Tom convinces Huck to go to the cemetery.
- 4 Both friends escape to the river.
- 9 Tom goes back to the cave but the gold is gone.
- 5 They row for hours and find a cave.
- 8 Tom tries to report the crime but Aunt Polly doesn't believe him.
- 6 Huck and Tom hide the treasure and go to the village.
- 1 Tom is painting a white fence.
- 10 Tom and Huck escape from the cave but they sacrifice the treasure. Friendship is more important than gold.
- 3 Tom and Huck find a corpse.



Now, rewrite the story in past simple using the order that you have chosen:

Tom was painting a white fence. Tom convinced Huck to go to the cemetery. Tom and Huck found a corpse. Both friends escaped to the river. They rowed for hours and found a cave. Huck and Tom hid the treasure and went to the village. The town thought Tom and Huck were dead. Tom tried to report the crime, but Aunt Polly didn't believe him. Tom went back to the cave, but the gold was gone. Tom and Huck escaped from the cave, but they sacrificed the treasure. Friendship was more important than gold.

SPEAKING: GUESS WHO

Work in pairs. Think of one of the characters from the play. Let your partner guess the name of the character by asking you questions. Do not give him or her any clues. Answer yes or no. Once your partner has guessed your character, change roles.





transeduca

www.transeduca.com

info@transeduca.com

911 138 140 / 934 740 002