

# TOM SAWYER

5th and 6th of Primary





**BEFORE GOING TO THE THEATRE**

**1. THE STORY**

Tom Sawyer is a kid who doesn't like school and who prefers to enjoy playing on the banks of the river. His aunt Polly is very worried because he always gets in trouble. But Tom is a rebellious and adventurous child with a big heart.

He spends his days with his best friend, Huckleberry Finn. The two friends like to fish, sleep, eat and play at being pirates.

One day, they find a mysterious treasure in a cemetery. They decide to hide it in a cave, but a very dangerous murderer will follow them.

Discuss the following questions with the whole class:

Do you know who Tom Sawyer is? Have you ever seen a film or read a book about him?



Is he naughty or is he responsible?



Do you think he has any friends? What are they like?



Do you think Tom listens to his Aunt Polly or prefers going on adventures?



Have you ever disobeyed your parents or grandparents to do something wrong? How did it end?





## 2. THE MAIN CHARACTERS

**Tom Sawyer** is a young boy who lives near the Mississippi River. He is easy-going, peaceful and a bit naughty. He always skips school classes and goes to play. His biggest dream is to be a pirate in search of great treasures. He is an orphan who has been raised by his aunt Polly.



**Huckleberry Finn**, like Tom, is a boy who does not like going to school. He prefers to relax and whistle. He has pimples on his face, but he is convinced that he will be a millionaire and that no one will care. Huck is clumsy and not as clever as Tom, but he's determined and brave.

Can you spot all the adjectives in the descriptions? Do you know the meaning?

.....

.....

.....

.....

.....

.....

.....





**3. ADVENTURES AND FRIENDSHIP**

Huckleberry Finn and Tom Sawyer are best friends. They play after school and go on adventures together.

Who are your best friends?

.....

.....

Draw and describe them using adjectives (funny, big, lazy, clever, etc.).

Do you like adventures? Explain your last adventure with a friend.

.....

.....

.....





#### 4. TREASURE HUNT

Draw the right path on the map of the next page following these instructions:

1. You are on the pirate boat with Tom Sawyer and Huckleberry Finn.
2. Travel to the north (N on the compass).
3. OH NO! An octopus attacked you. Turn left, to the west, and you will see a lighthouse. Land there.
4. Go to the eastern forest to find the hidden shovel.
5. Once you are there, head to the south by the coast until you find a volcano.
6. Go inside the volcano to check if the treasure is there.
7. RUN, RUN! It's about to erupt! Go to the southwest, you'll find an oasis there. Are you thirsty? Stop here to drink after the long run.
8. You are facing the south. Turn left, you'll see three caves.
9. Explore them one by one. Is the treasure there? Hmm... the last place is the giant Skull Rock...
  - But it's so dangerous.
  - Who cares? Let's go!
10. Walk towards Skull Rock.
  - Ahhh! Is that a corpse?
  - No, WAIT! It's the TREASURE!

**11. Congratulations! You found it!**





**5. GRAMMAR**

Write one question for each of the answers:

a) Polly is Tom's aunt.

.....

a) The fence is white.

.....

a) Tom and Huck don't go to school.

.....

a) Huck has a pimple on his face.

.....

a) Tom and Huck hide the treasure in a cave.

.....

a) They got to the island by ship.

.....

a) Aunt Polly is scared because she thinks Tom is dead.

.....

a) Tom and Huck come back to the village at night.

.....





6. VOCABULARY

a) What fruit or vegetable is it?

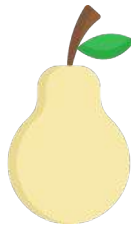
Tom Sawyer likes to eat apples. Look at the pictures and write down the name of each fruit or vegetable.



-----



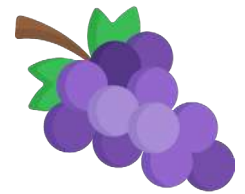
-----



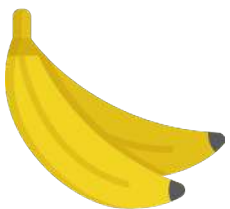
-----



-----



-----



-----



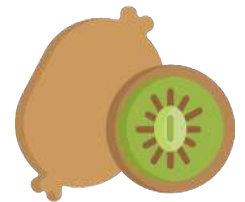
-----



-----



-----



-----



-----



-----



-----



-----



-----



-----



-----



-----



-----



-----





**b) Adventures crossword**

Find the hidden adventure vocabulary in the crossword.

Island      Pirate      Treasure      Map      Backpack      Gold      Ship      Compass

F	I	L	P	X	R	T	G	B	G
J	G	O	L	D	M	C	P	A	U
I	O	P	L	F	T	W	R	C	Y
S	T	B	I	Z	R	U	S	K	D
L	M	A	E	R	E	S	Y	P	W
A	L	E	N	F	A	E	M	A	M
N	R	O	I	P	S	T	Y	C	A
D	T	O	M	L	U	H	E	K	R
F	R	O	Z	E	R	W	I	C	C
N	C	H	I	L	E	M	A	P	T

**c) Choose three objects you would take to a desert island and explain why.**

.....

.....

.....

.....



d) Read and practice this vocabulary from the play.

Brush	Spider	Punishment	Moustache	Pimple	Anchor	Graveyard
Corpse	River	Funeral	Casket	Skull	Boat	Paddle
To steal	To panic	Fault	Portrait	To snore	Fence	Candle

#### 4. DRAW A PORTRAIT

Tom and Huck are looking for treasure and they see a very dangerous man. He has a scar on his cheek, a long beard, black teeth, a big hat and red eyes. Imagine this man and draw him:





**8. LISTENING**

**Listen to track 1 and answer the following questions:**

- Why is Tom Sawyer punished?

.....

- What animal did he throw at his teacher?

.....

- Aunt Polly says she doesn't want Tom to be out at night. Why?

.....

.....

- What does Tom Sawyer do to improve the portrait of Aunt Polly?

.....

.....

- What does Tom promise to give Huck in exchange for painting the fence?

.....

.....

- Why does Huck want to be rich?

.....

.....



**7. SPEAKING: Guess the word**

Work in pairs: explain the words below and let your classmate guess what you are describing.

Pirate

River

Summer

Danger

Killer

Corpse

Ship

Cave

Aunt

Friend

Island

Thief

Horizon

**AFTER GOING TO THE THEATRE**

Hello again! Did you enjoy the show? Let's see if you remember the plot:

**a) How many characters appear in the play? How many actors play them?**

.....  
.....

**b) Who do you think was the funniest character and why?**

.....  
.....

**c) How are they dressed?**

.....  
.....  
.....



**d) What is your favourite scene? Why?**

.....  
.....  
.....  
.....  
.....

**e) Write a review of the play. Remember to include comments about the acting, costumes, set, sound and lighting. (100 words)**

.....  
.....  
.....  
.....  
.....  
.....  
.....  
.....  
.....  
.....  
.....  
.....





Order the scenes from 1 to 10 and share your answer with your classmates.

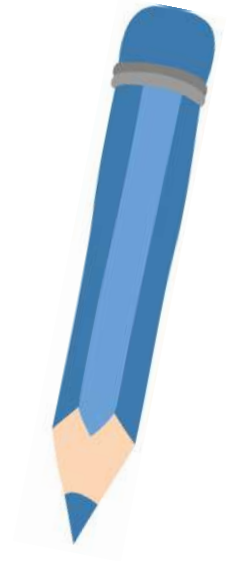
- The town thinks Tom and Huck are dead.
- Tom convinces Huck to go to the cemetery.
- Both friends escape to the river.
- Tom goes back to the cave but the gold is gone.
- They row for hours and find a cave.
- Tom tries to report the crime but Aunt Polly doesn't believe him.
- Huck and Tom hide the treasure and go to the village.
- Tom is painting a white fence.
- Tom and Huck escape from the cave but they sacrifice the treasure. Friendship is more important than gold.
- Tom and Huck find a corpse.



# TOM SAWYER

5th and 6th of Primary

Now draw your favourite scene:



[www.transeduca.com](http://www.transeduca.com)  
[info@transeduca.com](mailto:info@transeduca.com)  
911 138 140  
934 740 002



transeduca

[www.transeduca.com](http://www.transeduca.com)

[info@transeduca.com](mailto:info@transeduca.com)

911 138 140 / 934 740 002